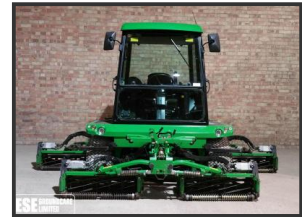


## John Deere 1905 5 Gang Mower



**£11,450.00**

John Deere 1905 5 Gang Mower. 2119 hrs, 4wd, 3.45m cut, 49hp diesel engine, ESP cutting units fixed/ floating, fingertip unit control, 2 speed HST, fully glazed deluxe cab with air seat, power steering.

Very Good Condition

### Product Details

Product Details	
<b>Category/Type</b>	<b>Mowers</b>
<b>Make</b>	<b>John Deere</b>
<b>Model</b>	<b>1905 5 Gang Mower</b>
<b>Year</b>	-
<b>Hours</b>	<b>2119</b>

Clarks Drove, Soham, Ely, Cambs, CB7 5DW

Tel: +44 (0)7508 810655

[www.esegroundcare.co.uk](http://www.esegroundcare.co.uk) [sales@esegroundcare.co.uk](mailto:sales@esegroundcare.co.uk)